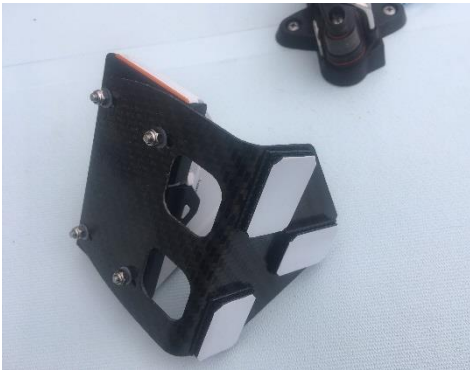


Installation and Removal Instructions - CarbonParts Mounting

Successful installation of your **CarbonParts** mounting requires an absolutely clean and dry deck and a few hours as described in the following instructions.

Step 1 - Clean the area of deck where your compass is going to be very thoroughly and ensure that it is absolutely dry. This is vital to ensure that the mounting pads adhere properly.

Step 2 - If not already fitted, press the mounting pads onto the base of the compass mounting. They will click in place.



Step 3 - Decide where you want to fit the compass mounting and align it accurately. Put a few pencil marks around the corners. The mounting is best fitted just aft of the control line blocks under the vang assembly.



Step 4 - Remove the backing from the mounting pads.



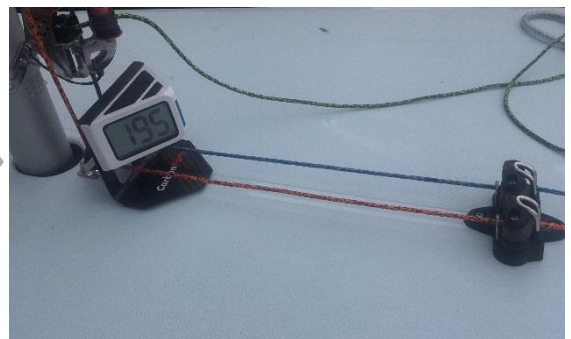
Step 5 - Carefully position the compass mounting just above the deck using your pencil marks for guidance and when in the correct position press down.



Step 6 - Press very firmly at the front and at the rear where the compass mountings are to ensure that the adhesive pads are pressed onto the deck. Keep pressing for a minute if possible. DO NOT try and remove the mounting yet.



Step 7 - Leave the compass mounting in position for as long as possible. DO NOT attempt to remove the compass mounting for at least one hour, or you may pull the mountings from the deck.



If your mountings don't successfully stick to the deck it is probably because the deck was not absolutely dry. If you have any problems, or need replacement mounting pads please contact us at info@carbonpartsgermany.de