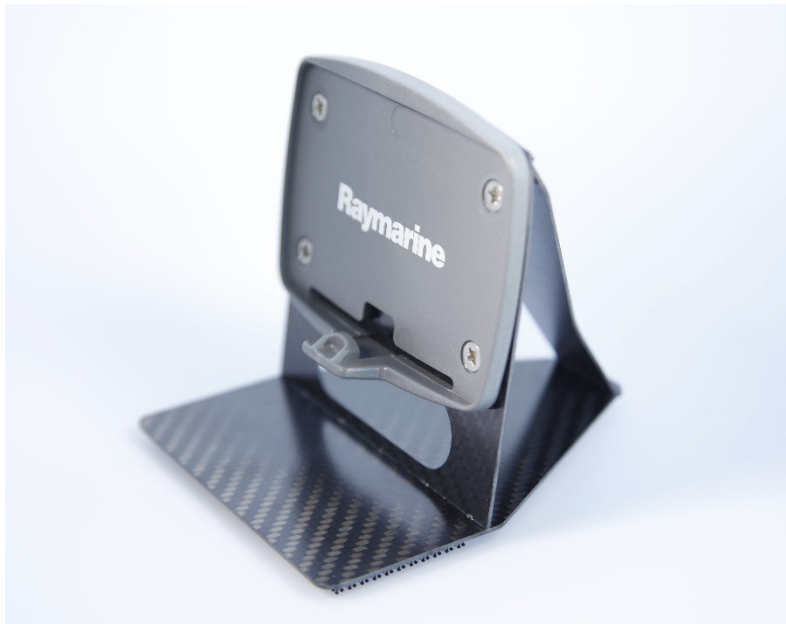


EC Mount

Product Overview



On 1st of January 2018 a class rule change came into force. Electronic compasses are now allowed.

Therefore, CarbonParts has developed a new product: The CarbonParts EC Mount. It is a carbon mount for the “Raymarine T060

Micro Compass”, as this is the most popular electronical compass in dinghy racing.

Benefits

- Same functionality as our “old” design
- No ropes get caught
- Lighter
- Easier to mount
- Cheaper
- Ready for the rule change